



HH/HW/HWS/HHS 50/60Hz

Hot Water Circulator Pump
Booster Pump Of Water Heater

The pumps can be used in both
open and closed systems.



STAIRS INDUSTRIAL CO., LTD.

HH / HW / HWS / HHS Hot Water Circulator Pump

Hot water pumps constitute a complete range of 3-speed circulator pumps, available both in 50&60 Hz.

The pumps can be used in both open and closed systems.

HH & HW pumps are of the canned -motor type, i.e. pump and motor form an integral unit without a shaft seal and with only two ceramic bearing for sealing.

The bearings are lubricated by the pumped liquid.

HH

General Data

Application	1
Features And Benefits	1
Accessories	1

Technical Data

Performance Curves	2
Specifications	2
Dimensions and Weights	2

HW

General Data

Application	3
Features And Benefits	3
Accessories	3

Technical Data

Performance Curves	4
Specifications	4
Dimensions and Weights	4

HHS

General Data

Application	5
Features And Benefits	5
Accessories	5

Technical Data

Performance Curves	6
Specifications	6
Dimensions and Weights	6

HWS

General Data

Application	7
Features And Benefits	7
Accessories	7

Technical Data

Performance Curves	8
Specifications	8
Dimensions and Weights	8



Model Code

	HH -	15 -	90 -	160
Series Name				
Inlet / Outlet Inside Diameter				
Maximum Head x 10 in Meter				
Port To Port Distance In Millimeter				

Applications

Hot water circulator pumps are designed for circulation of liquids in heating and air-conditioning systems. Examples of typical applications are:

- One- and two-pipe heating systems
- Main pumps
- Zone pumps
- Boiler shunt pumps
- Pumps for heating surfaces
- Calorifiers
- Underfloor heating systems
- Solar heating systems
- Heat pump systems
- Geothermal heating systems
- Heat recovery systems
- Two-pipe air-conditioning systems
- Pumps for refrigeration units

Features And Benefits

- Low noise
- Low energy
- Available with corrosion-resistant stainless steel pump casing
- High volume of water
- Easy to installation
- Include cable and plug

Accessories

Standard



Filter x 1 + Union x 1
(3/4" to 1/2")

Optional

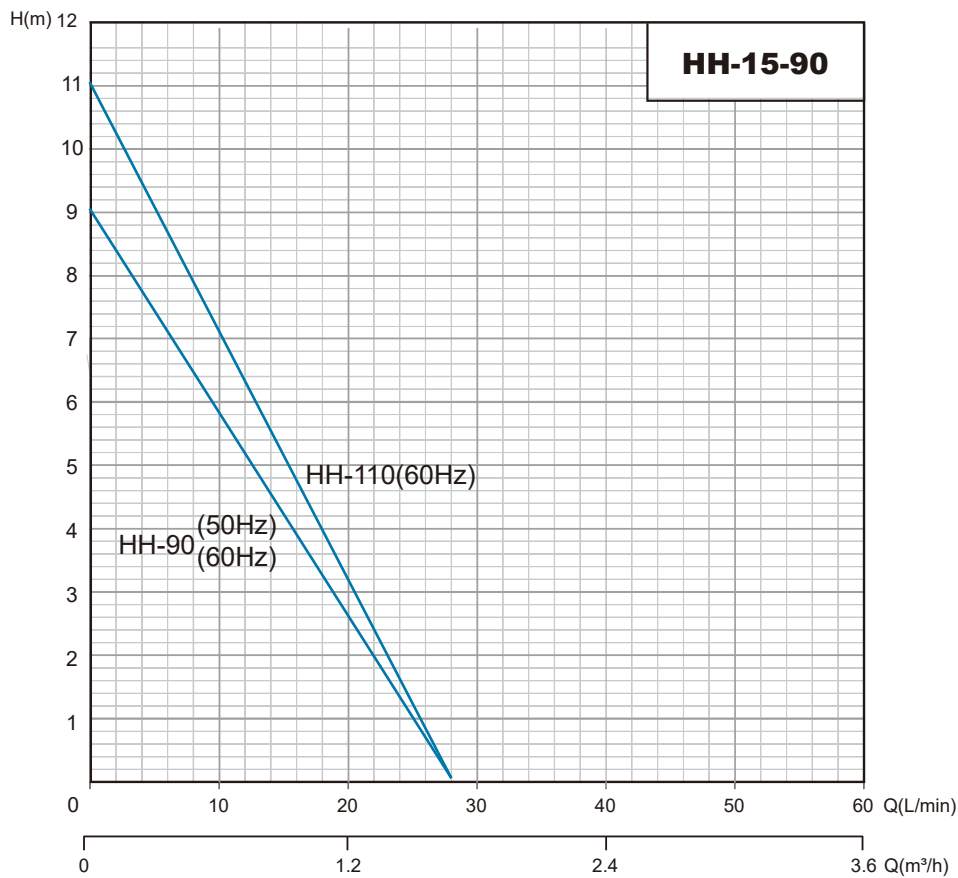


L shape fixtur



Plastic base

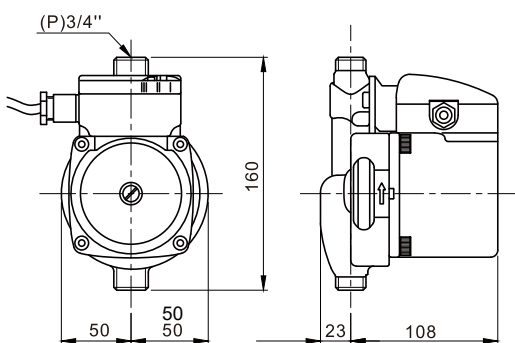
Performance Curves



Specifications

Model	Hz	Phase	Voltage (V)	Power (W)	Head (m)	Flow (L/min)	Current (A)	input/output
HH-25-40-130	50	1Φ	220 - 240V	110	9	1.5	0.5	3/4" / 1/2"
HH-15-90-160	60	1Φ	110V	110	9	1.5	1.0	3/4" / 1/2"
HH-15-90-160	60	1Φ	220V	110	9	1.5	0.5	3/4" / 1/2"
HH-15-110-160	60	1Φ	110V	120	11	1.5	0.5	3/4" / 1/2"
HH-15-110-160	60	1Φ	220V	120	11	1.5	1.05	3/4" / 1/2"

Dimensions and Weights



Model	Carton Perpallet	Pallet Size	Pallet Dimension L x W x H (cm)	Weight (kg)
HH-25-40-130	6	60	110 x 115 x 193	2.5
HH-15-90-160	6	60	110 x 115 x 193	2.5
HH-15-90-160	6	60	110 x 115 x 193	2.5
HH-15-110-160	6	60	110 x 115 x 193	2.5
HH-15-110-160	6	60	110 x 115 x 193	2.5



Model Code

	HW	-	25	-	40	-	160
Series Name							
Inlet / Outlet Inside Diameter							
Maximum Head x 10 in Meter							
Port To Port Distance In Millimeter							

Applications

Hot water circulator pumps are designed for circulation of liquids in heating and air-conditioning systems. Examples of typical applications are:

- One- and two-pipe heating systems
- Main pumps
- Zone pumps
- Boiler shunt pumps
- Pumps for heating surfaces
- Calorifiers
- Underfloor heating systems
- Solar heating systems
- Heat pump systems
- Geothermal heating systems
- Heat recovery systems
- Two-pipe air-conditioning systems
- Pumps for refrigeration units

Features And Benefits

- Low noise
- Low energy
- Available with corrosion-resistant stainless steel pump casing
- High volume of water
- Easy to installation

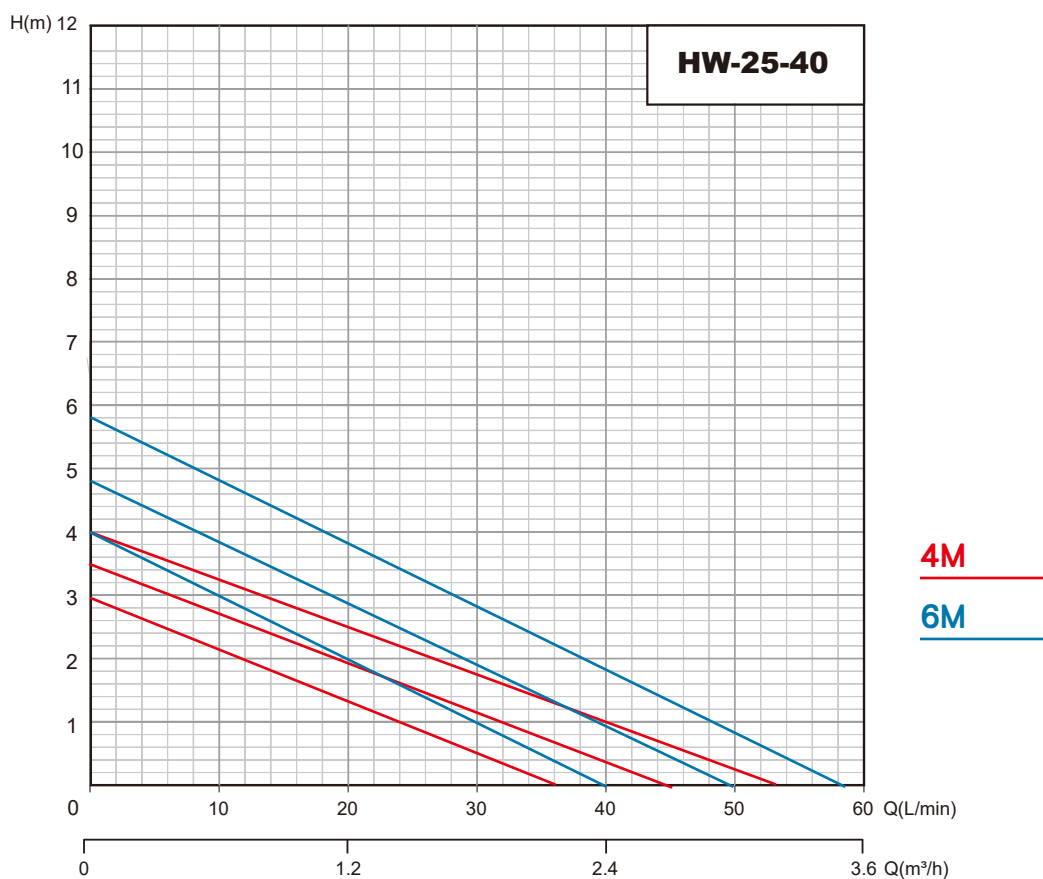
Accessories

Optional



Union 1-1/2" to 3/4"
or
1-1/2" to 1"

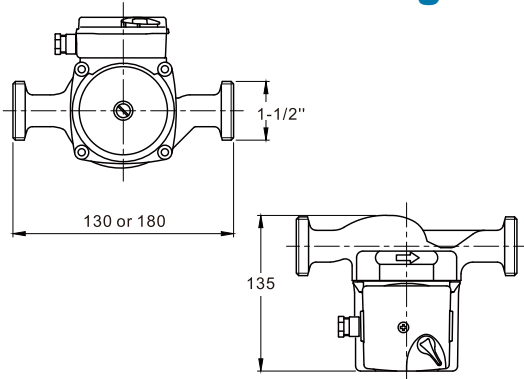
Performance Curves



Specifications

Model	Hz	Phase	Voltage (V)	Power (W)	Head (m)	Flow (L/min)	Current (A)	input/output
HW-25-40-130	50	1Φ	220 - 240V	62.4 / 53.7 / 43.7	4	3.2	0.27	1-1/2"
HW-25-40-180	50	1Φ	220 - 240V	62.4 / 53.7 / 43.7	4	3.2	0.27	1-1/2"
HW-25-60-130	50	1Φ	220 - 240V	73.5 / 59.7 / 46.6	6	3.5	0.27	1-1/2"
HW-25-60-180	50	1Φ	220 - 240V	73.5 / 59.7 / 46.6	6	3.5	0.27	1-1/2"
HW-25-60-130	60	1Φ	220V	80.0 / 65.0 / 50.0	6	3.2	0.37	1-1/2"
HW-25-60-180	60	1Φ	220V	80.0 / 65.0 / 50.0	6	3.2	0.37	1-1/2"
HW-25-60-130	60	1Φ	110V	80.0 / 65.0 / 50.0	6	3.5	0.73	1-1/2"
HW-25-60-180	60	1Φ	110V	80.0 / 65.0 / 50.0	6	3.5	0.73	1-1/2"

Dimensions and Weights



Model	Carton Perpallet	Pallet Size	Pallet Dimension L x W x H (cm)	Weight (kg)
HW-25-40-130	6	60	110 x 115 x 193	2.3
HW-25-40-180	6	60	110 x 115 x 193	2.6
HW-25-60-130	6	60	110 x 115 x 193	2.3
HW-25-60-180	6	60	110 x 115 x 193	2.6
HW-25-60-130	6	60	110 x 115 x 193	2.3
HW-25-60-180	6	60	110 x 115 x 193	2.6
HW-25-60-130	6	60	110 x 115 x 193	2.3
HW-25-60-180	6	60	110 x 115 x 193	2.6

Model Code

HHS 15 - 90 - 160

Series Name

Inlet / Outlet Inside Diameter

Maximum Head x 10 in Meter

Port To Port Distance In Millimeter



Applications

Hot water circulator pumps are designed for circulation of liquids in heating and air-conditioning systems. Examples of typical applications are:

- One- and two-pipe heating systems
- Main pumps
- Zone pumps
- Boiler shunt pumps
- Pumps for heating surfaces
- Calorifiers
- Underfloor heating systems
- Solar heating systems
- Heat pump systems
- Geothermal heating systems
- Heat recovery systems
- Two-pipe air-conditioning systems
- Pumps for refrigeration units

Features And Benefits

- Low noise
- Low energy
- Available with corrosion-resistant stainless steel pump casing
- High volume of water
- Easy to installation
- Include cable and plug

Accessories

Standard



Filter x 1 + Union x 1
(3/4" to 1/2")

Optional

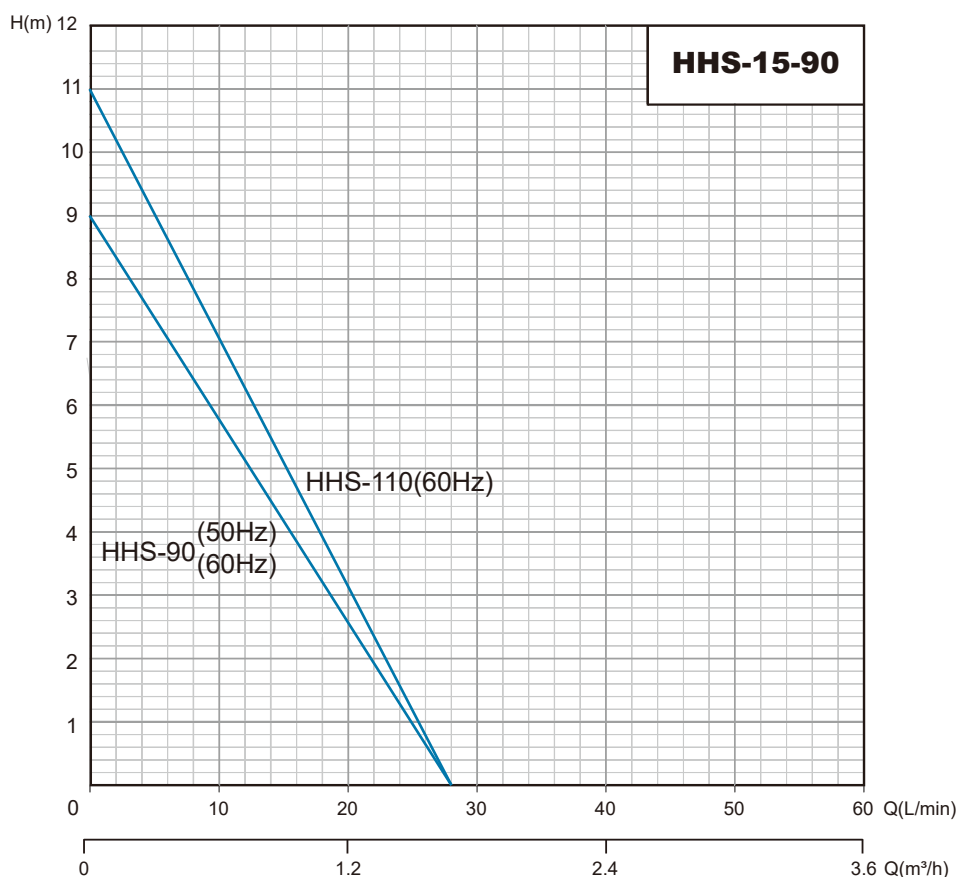


L shape fixtur



Plastic base

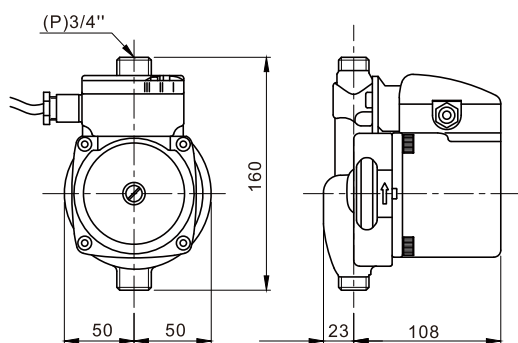
Performance Curves



Specifications

Model	Hz	Phase	Voltage (V)	Power (W)	Head (m)	Flow (L/min)	Current (A)	input/output
HHS-25-40-130	50	1Φ	220 - 240V	110	9	1.5	0.5	3/4" / 1/2"
HHS-15-90-160	60	1Φ	110V	110	9	1.5	1.0	3/4" / 1/2"
HHS-15-90-160	60	1Φ	220V	110	9	1.5	0.5	3/4" / 1/2"
HHS-15-110-160	60	1Φ	110V	120	11	1.5	0.5	3/4" / 1/2"
HHS-15-110-160	60	1Φ	220V	120	11	1.5	1.05	3/4" / 1/2"

Dimensions and Weights



Model	Carton Perpallet	Pallet Size	Pallet Dimension L x W x H (cm)	Weight (kg)
HHS-25-40-130	6	60	110 x 115 x 193	2.5
HHS-15-90-160	6	60	110 x 115 x 193	2.5
HHS-15-90-160	6	60	110 x 115 x 193	2.5
HHS-15-110-160	6	60	110 x 115 x 193	2.5
HHS-15-110-160	6	60	110 x 115 x 193	2.5



Model Code

	HWS	-	25	-	40	-	160
Series Name							
Inlet / Outlet Inside Diameter							
Maximum Head x 10 in Meter							
Port To Port Distance In Millimeter							

Applications

Hot water circulator pumps are designed for circulation of liquids in heating and air-conditioning systems. Examples of typical applications are:

- One- and two-pipe heating systems
- Main pumps
- Zone pumps
- Boiler shunt pumps
- Pumps for heating surfaces
- Calorifiers
- Underfloor heating systems
- Solar heating systems
- Heat pump systems
- Geothermal heating systems
- Heat recovery systems
- Two-pipe air-conditioning systems
- Pumps for refrigeration units

Features And Benefits

- Low noise
- Low energy
- Available with corrosion-resistant stainless steel pump casing
- High volume of water
- Easy to installation

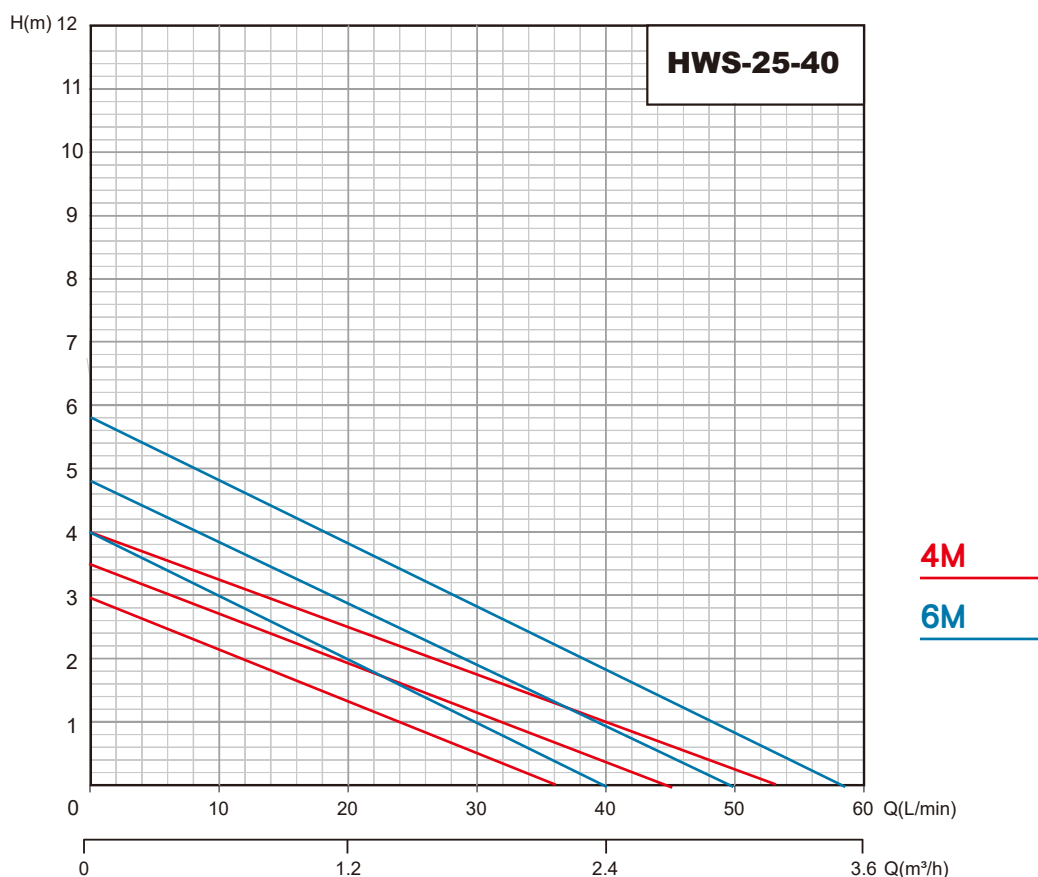
Accessories

Optional



Union 1-1/2" to 3/4"
or
1-1/2" to 1"

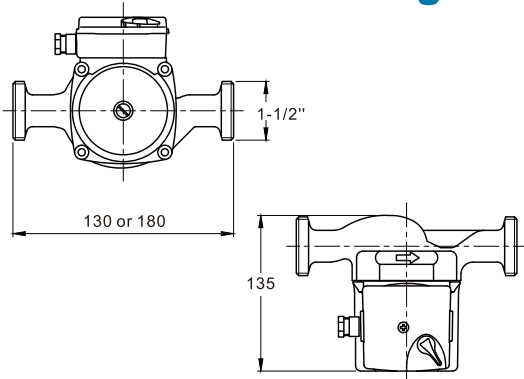
Performance Curves



Specifications

Model	Hz	Phase	Voltage (V)	Power (W)	Head (m)	Flow (L/min)	Current (A)	input/output
HWS-25-40-130	50	1Φ	220 - 240V	62.4 / 53.7 / 43.7	4	3.2	0.27	1-1/2"
HWS-25-40-180	50	1Φ	220 - 240V	62.4 / 53.7 / 43.7	4	3.2	0.27	1-1/2"
HWS-25-60-130	50	1Φ	220 - 240V	73.5 / 59.7 / 46.6	6	3.5	0.27	1-1/2"
HWS-25-60-180	50	1Φ	220 - 240V	73.5 / 59.7 / 46.6	6	3.5	0.27	1-1/2"
HWS-25-60-130	60	1Φ	220V	80.0 / 65.0 / 50.0	6	3.2	0.37	1-1/2"
HWS-25-60-180	60	1Φ	220V	80.0 / 65.0 / 50.0	6	3.2	0.37	1-1/2"
HWS-25-60-130	60	1Φ	110V	80.0 / 65.0 / 50.0	6	3.5	0.73	1-1/2"
HWS-25-60-180	60	1Φ	110V	80.0 / 65.0 / 50.0	6	3.5	0.73	1-1/2"

Dimensions and Weights



Model	Carton Perpallet	Pallet Size	Pallet dimension L x W x H (cm)	Weight (kg)
HWS-25-40-130	6	60	110 x 115 x 193	2.3
HWS-25-40-180	6	60	110 x 115 x 193	2.6
HWS-25-60-130	6	60	110 x 115 x 193	2.3
HWS-25-60-180	6	60	110 x 115 x 193	2.6
HWS-25-60-130	6	60	110 x 115 x 193	2.3
HWS-25-60-180	6	60	110 x 115 x 193	2.6
HWS-25-60-130	6	60	110 x 115 x 193	2.3
HWS-25-60-180	6	60	110 x 115 x 193	2.6



1110118